

CONTACTOR, AC-3 11 KW/400 V, AC 42 V, 50/60 HZ, 3-POLE,
SIZE S0, SCREW CONNECTION

product brand name	SIRIUS
Product designation	power contactor

General technical data:

Size of contactor	S0
Degree of pollution	3
Protection class IP	
• on the front	IP20
• of the terminal	IP20
Mechanical service life (switching cycles)	
• of contactor typical	10 000 000
• of the contactor with added electronics-compatible auxiliary switch block typical	5 000 000
• of the contactor with added auxiliary switch block typical	10 000 000

Ambient conditions:

Installation altitude at height above sea level maximum	2 000 m
Ambient temperature	
• during operation	-25 ... +60 °C

Main circuit:

Number of NO contacts for main contacts	3
Number of NC contacts for main contacts	0
Operating current	
• at AC-1 at 400 V	
— at ambient temperature 40 °C rated value	40 A
• at AC-1 up to 690 V	
— at ambient temperature 40 °C rated value	40 A
— at ambient temperature 60 °C rated value	35 A
• at AC-3	
— at 400 V rated value	25 A
Operating current	
• at 1 current path at DC-1	
— at 24 V rated value	35 A
— at 110 V rated value	4.5 A
• with 2 current paths in series at DC-1	

— at 24 V rated value	35 A
— at 110 V rated value	35 A
• with 3 current paths in series at DC-1	
— at 24 V rated value	35 A
— at 110 V rated value	35 A
Operating current	
• at 1 current path at DC-3 at DC-5	
— at 24 V rated value	20 A
— at 110 V rated value	2.5 A
• with 2 current paths in series at DC-3 at DC-5	
— at 110 V rated value	15 A
— at 24 V rated value	35 A
• with 3 current paths in series at DC-3 at DC-5	
— at 110 V rated value	35 A
— at 24 V rated value	35 A
Operating power	
• at AC-1	
— at 400 V rated value	23 kW
• at AC-2 at 400 V rated value	11 kW
• at AC-3	
— at 400 V rated value	11 kW
— at 500 V rated value	11 kW
— at 690 V rated value	11 kW
Power loss [W] at AC-3 at 400 V for rated value of the operating current per conductor	1.6 W

Control circuit/ Control:

Type of voltage of the control supply voltage	AC
Control supply voltage at AC	
• at 50 Hz rated value	42 V
• at 60 Hz rated value	42 V
• rated value	50 Hz
Control supply voltage frequency 2 rated value	60 Hz
Operating range factor control supply voltage rated value of magnet coil at AC	
• at 50 Hz	0.8 ... 1.1
• at 60 Hz	0.85 ... 1.1
Apparent pick-up power of magnet coil at AC	64 V·A
Inductive power factor with closing power of the coil	0.72
Apparent holding power of magnet coil at AC	8.4 V·A
Inductive power factor with the holding power of the coil	0.24

Auxiliary circuit:

Number of NC contacts <ul style="list-style-type: none">• for auxiliary contacts<ul style="list-style-type: none">— instantaneous contact	0
Number of NO contacts <ul style="list-style-type: none">• for auxiliary contacts<ul style="list-style-type: none">— instantaneous contact	0
Operating current at AC-12 maximum	10 A
Operating current at AC-15 <ul style="list-style-type: none">• at 230 V rated value• at 400 V rated value	6 A 3 A
Operating current at DC-12 <ul style="list-style-type: none">• at 60 V rated value• at 110 V rated value• at 220 V rated value	6 A 3 A 1 A
Operating current at DC-13 <ul style="list-style-type: none">• at 24 V rated value• at 60 V rated value• at 110 V rated value• at 220 V rated value	10 A 2 A 1 A 0.3 A
Contact reliability of auxiliary contacts	1 faulty switching per 100 million (17 V, 1 mA)

Short-circuit protection

Design of the fuse link <ul style="list-style-type: none">• for short-circuit protection of the main circuit<ul style="list-style-type: none">— with type of coordination 1 required— with type of assignment 2 required• for short-circuit protection of the auxiliary switch required	fuse gL/gG: 100 A fuse gL/gG: 35 A fuse gL/gG: 10 A
--	---

Installation/ mounting/ dimensions:

Mounting type <ul style="list-style-type: none">• Side-by-side mounting	screw and snap-on mounting onto 35 mm standard mounting rail according to DIN EN 50022 Yes
Height	85 mm
Width	45 mm
Depth	91 mm
Required spacing <ul style="list-style-type: none">• for grounded parts<ul style="list-style-type: none">— at the side	6 mm






Connections/ Terminals:


Type of electrical connection <ul style="list-style-type: none">• for main current circuit	screw-type terminals
---	----------------------

<ul style="list-style-type: none"> • for auxiliary and control current circuit 	screw-type terminals
Type of connectable conductor cross-sections <ul style="list-style-type: none"> • for main contacts <ul style="list-style-type: none"> — solid — single or multi-stranded — finely stranded with core end processing • at AWG conductors for main contacts 	2x (1 ... 2.5 mm ²), 2x (2.5 ... 6 mm ²), max. 2x 10 mm ² 2x (1 ... 2,5 mm ²), 2x (2,5 ... 6 mm ²), max. 2x 10 mm ² 2x (1 ... 2.5 mm ²), 2x (2.5 ... 6 mm ²) 2x (16 ... 12), 2x (14 ... 10), 1x 8
Type of connectable conductor cross-sections <ul style="list-style-type: none"> • for auxiliary contacts <ul style="list-style-type: none"> — solid — finely stranded with core end processing • at AWG conductors for auxiliary contacts 	2x (0.5 ... 1.5 mm ²), 2x (0.75 ... 2.5 mm ²), max. 2x (0.75 ... 4 mm ²) 2x (0.5 ... 1.5 mm ²), 2x (0.75 ... 2.5 mm ²) 2x (20 ... 16), 2x (18 ... 14), 1x 12

Certificates/approvals

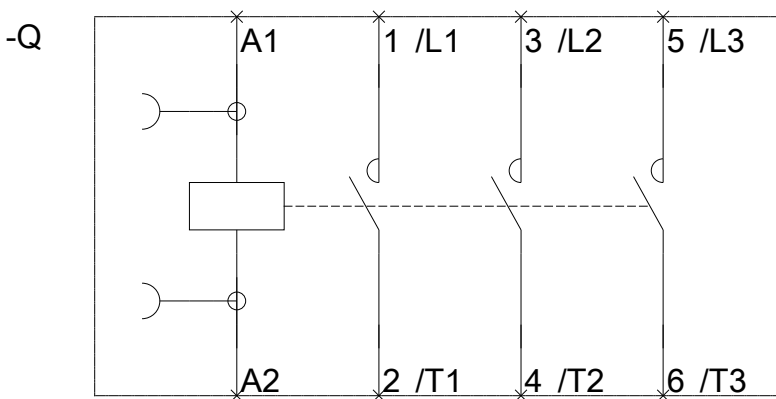
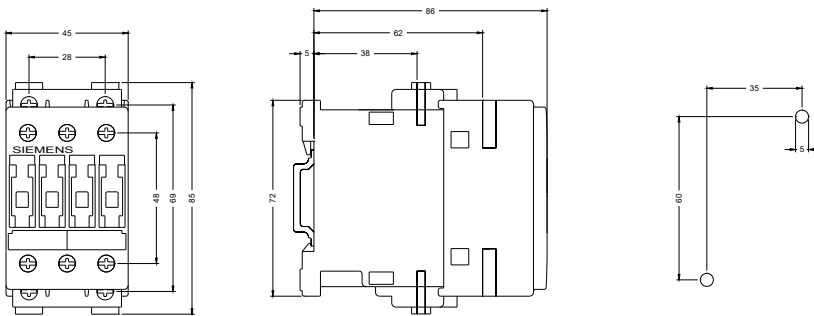
General Product Approval	Declaration of Conformity	Test Certificates
 CCC	 CSA	 UL
 EAC	 EG-Konf.	spezielle Prüfbescheinigungen n

Test Certificates	Shipping Approval
Typprüfbescheinigung/Werkszeugnis	 ABS
	 DNV
	 GL
	 LRS
	 RINA

Shipping Approval	other
 RMRS	sonstig
	Umweltbestätigung
	Bestätigungen

Further information

- Information- and Downloadcenter (Catalogs, Brochures,...)**
<http://www.siemens.com/industrial-controls/catalogs>
- Industry Mall (Online ordering system)**
<https://mall.industry.siemens.com/mall/en/en/Catalog/product?mlfb=3RT10261AD20>
- Cax online generator**
<http://support.automation.siemens.com/WW/CAXorder/default.aspx?lang=en&mlfb=3RT10261AD20>
- Service&Support (Manuals, Certificates, Characteristics, FAQs,...)**
<https://support.industry.siemens.com/cs/ww/en/ps/3RT10261AD20>



last modified:

31.03.2016