

SMP-M LD TERMINATION 26.5 GHZ

ST2648

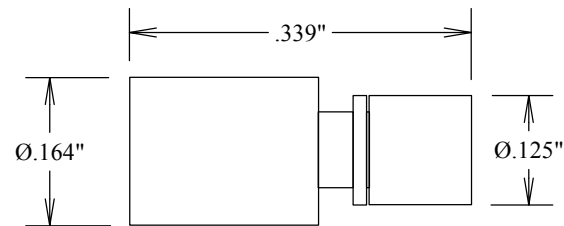
SPECIFICATIONS

ELECTRICAL:

FREQUENCY: 0-26.5 GHZ
IMPEDANCE: 50 OHMS
VSWR 1.30:1 @ 18 GHZ
VSWR 1.50:1 @ 26.5 GHZ
IMPEDANCE: 50 OHMS

MECHANICAL:

MATERIAL BODY: BeCu
CENTER CONTACTS: BeCu
PLATING: Au PER MIL-G-45204
OP. TEMP RANGE: -55° to +125°C
ROHS COMPLIANT



SMP-M
LIMITED DETENTE

FAIRVIEW MICROWAVE INC.

ALLEN, TX 75013 WWW.FAIRVIEWMICROWAVE.COM

TITLE

SMP-M LD TERMINATION 26.5 GHZ

SIZE	CAGE CODE	DWG NO	REV
A	3FKR5	ST2648	--

SCALE

SHEET