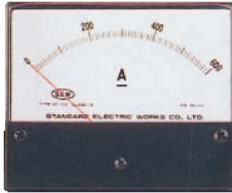
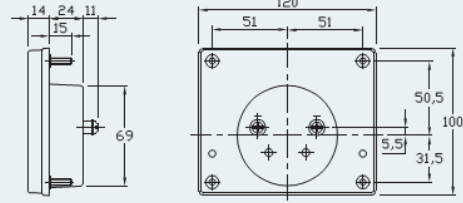


S Series

ST-110



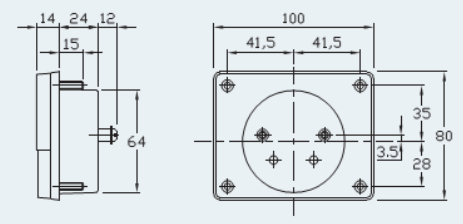
PANEL CUT-OUT



ST-100



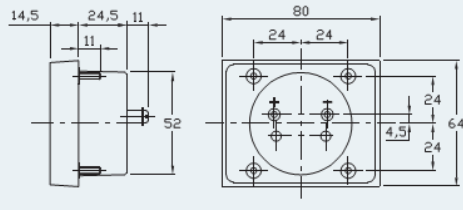
PANEL CUT-OUT



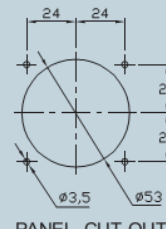
ST-680



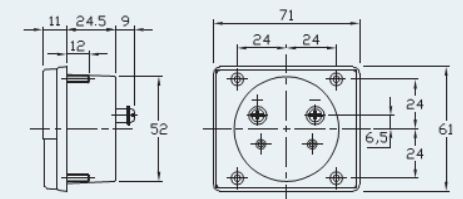
PANEL CUT-OUT



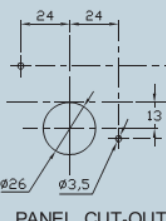
ST-670



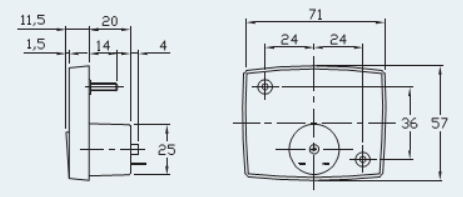
PANEL CUT-OUT



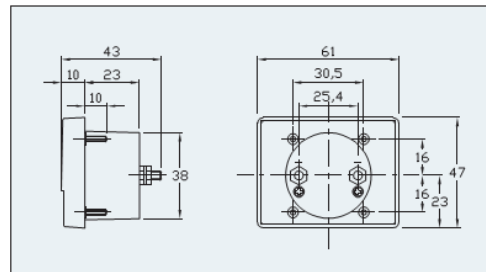
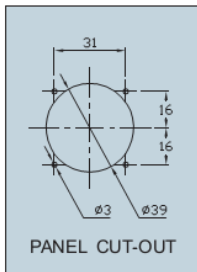
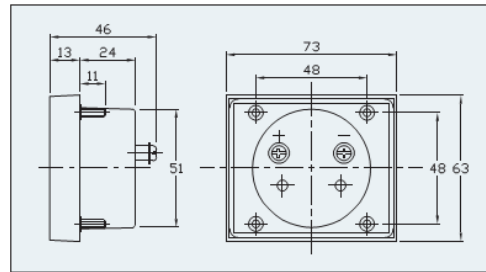
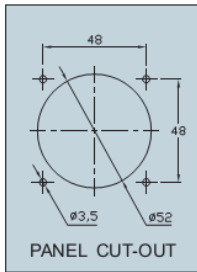
ST-670R



PANEL CUT-OUT



S Series



Measuring Ranges :

Moving Coil Type

DC μ A	DC mA	DC A	DC mV	DC V
50	1	150	1	50
100	5	200	5	3
150	10	250	10	5
200	15	300	20	10
250	20	500	30	20
300	30	800		30
500	100			50
800				600

Moving Iron Type

AC mA	AC A	AC V
50	1	150
100	5	250
150	10	300
200	15	500
250	20	
300	30	
500	50	
800		

Rectifier Type

AC V
30
50
100
150
200
300
500

DC up to 50A : ST-110, ST-100, ST-670, ST-670B

DC up to 30A : ST-680

DC up to 10A : ST-670R, ST-645

AC up to 50A : ST-110, ST-100

AC up to 30A : ST-670, ST-670B

• Hz Meter :

Measuring Ranges : 45~55Hz, 55~65Hz, 45~65Hz

Rated Voltage : 110V, 220V

Accuracy : Class 2.0

Suitable Model : ST-110, ST-100, ST-680, ST-670, ST-670B

• Case And Composition :

Acrylic resin front and Bakelite case(Glass window, ABS resin frame, Bakelite case : Only ST-680)

Four studs mounting(Two stud for ST-670R)

• Accuracy :

Moving coil type : class 2.0

Moving Iron type : Class 2.5

Rectifier type : Class 2.0

• Color :

Black case

white scale plate.(yellow scale plate only ST-645)

• Pointer :

Tube or knife-type, color in black or red.