

EMIN

Testing & Measuring Everything

SENDIG - 8-Channel Vibration Analyzer S966



Product Introduction

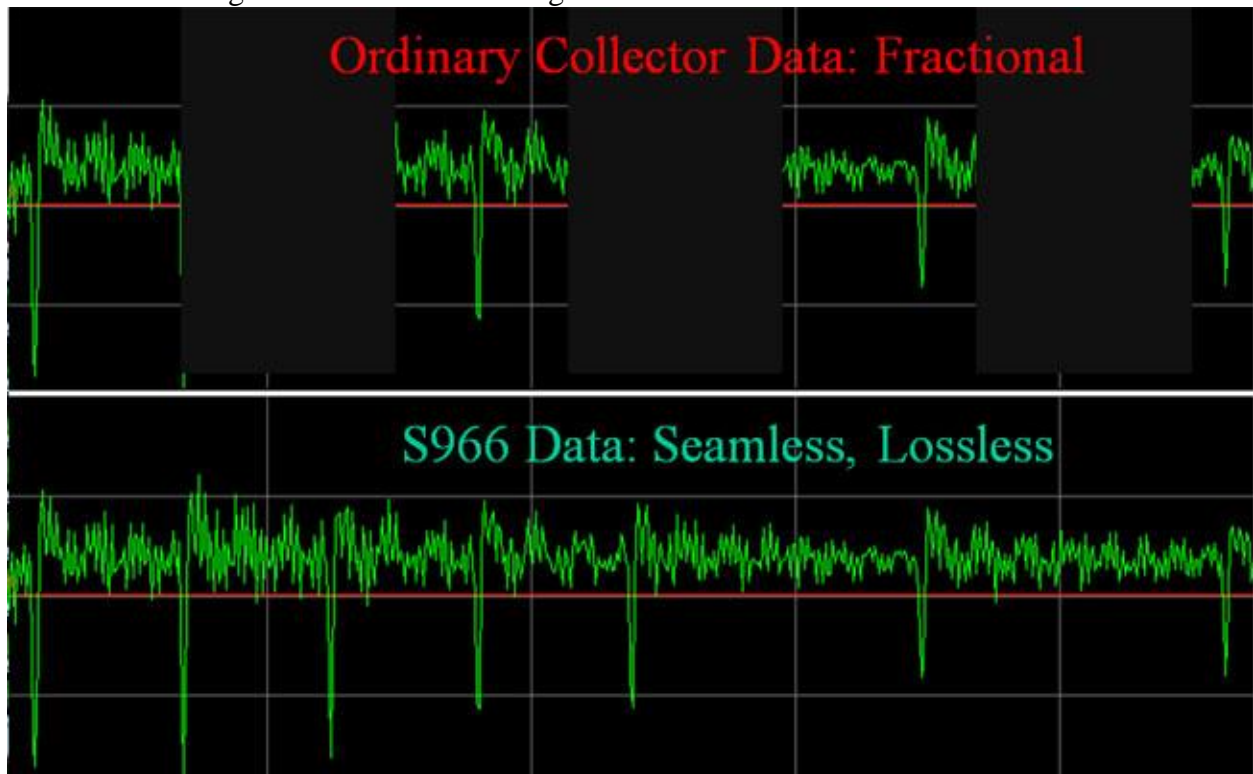
S966 8-Channel Vibration Analyzer

Simultaneously Seamless Measure and Record with Low Frequency Option, Auto Diagnosis



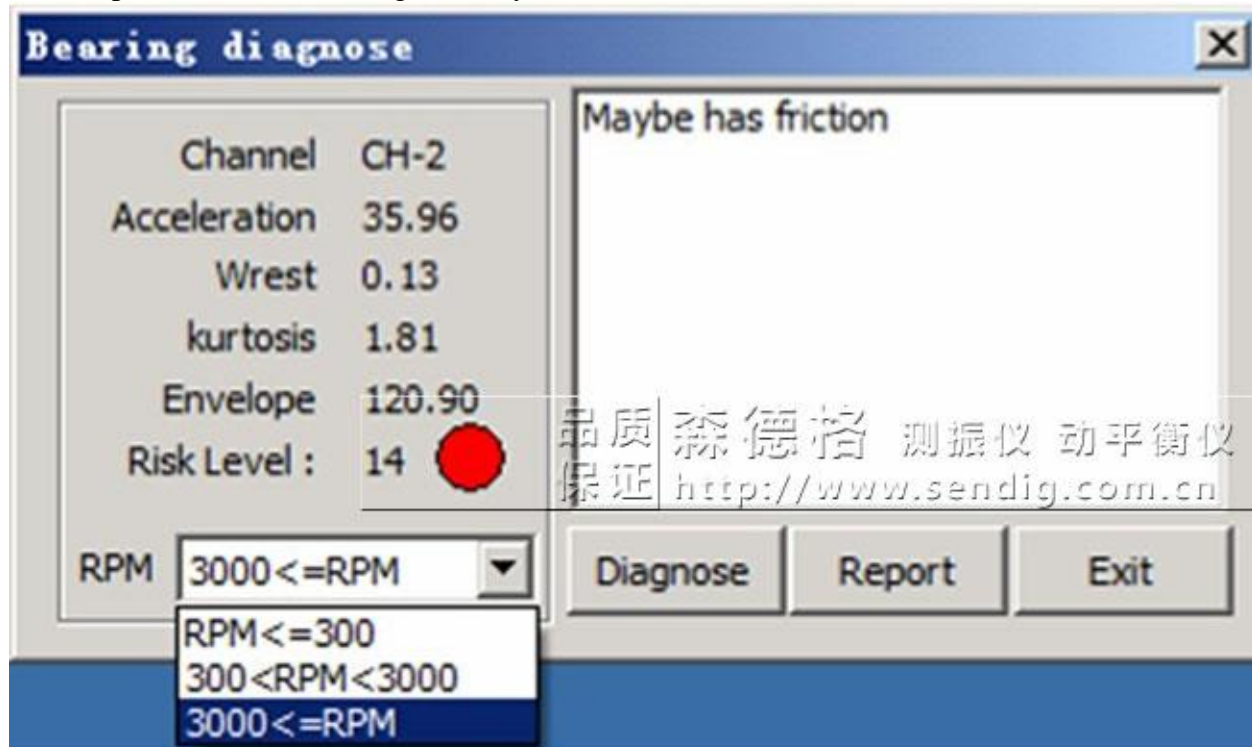
Features:

- ★8-Channels long-time seamless recording



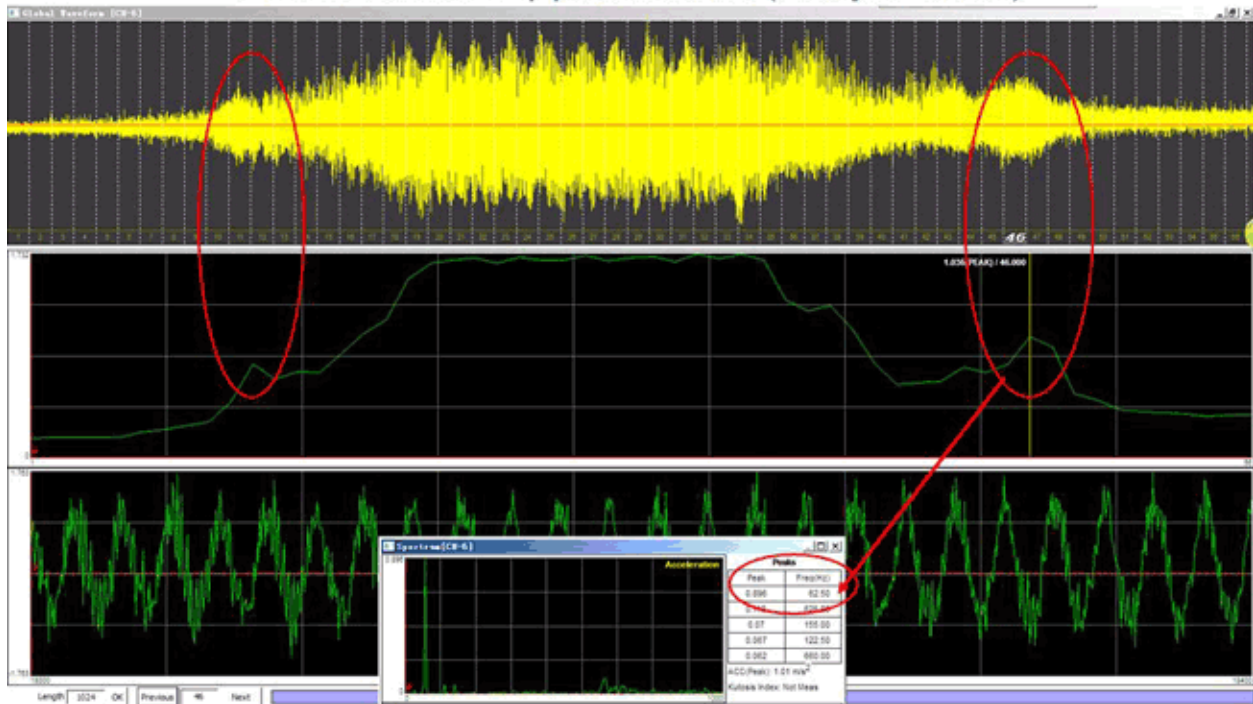
- ★Input: Charge or IEPE Accelerometer, Voltage

- ★Overall values, Raw waveform, Spectrum, Bode Graph, 1X Phase, 1/2 planes Balancing
- ★Non-stable Vibration Analysis
- ★Startup-Shutdown Recording & Analysis



- ★400-3200 Lines Spectrum
- ★Frequency Span: 10,20,50,100,200,500,1k,2k,5k,10kHz,15kHz
- ★Dual diagnostic Expert System: Automatic & Accurate, MS-Word Format diagnosis report
- ★ISO-10816 included, Health condition indicated by Green/Yellow/Red Light.
- ★Specific bearing fault detection tool for even non-steady working element bearing.

A whole start-run-stop process record (Totally 30 second)



Resonance , at 62.5Hz, appears at both startup and shutdown period



Specification:

- ★Frequency Range: 0.5Hz~15kHz(3dB);
2.5Hz~10kHz(1dB); 4Hz~5kHz(0.5dB)
- ☆RPM Range: 60~60000 RPM
- ★Vibration Measurement Range/Resolution

| | | |
|--------------------|---------------------|---------------------|
| Acceleration Peak: | 100m/s ² | 0.1m/s ² |
| Velocity RMS : | 100mm/s | 0.1mm/s |
| Dispalcemenr P_P: | 2mm | 1 |
| Voltage Peak : | +10V | 0.1mV |
- ☆Auto Range & Manual Range Selectable
- ★8th-order Anti-aliasing Filter
- ☆Powered by USB, No additional power required
- ★2-Channels & 4-Channels version optional

☆Robust Metal Carry Case for Field Testing

