

AM73915MZTL



The Dino-Lite Edge 3.0 AM73915MZTL, a USB 3.0 all-in-one device with LWD optics, allows to fulfill most demand and expectation of professionals. Taking the advantage of USB 3.0 high-speed transmission, the AM73915MZTL delivers fluid and uncompressed images with 15FPS at 5MP or 45FPS at 1.3MP resolutions. And yet, it added with sophisticated EDOF/EDR, AMR and FLC functionalities which can be used in a more demanding application.

Overview



High-speed transmission

Through the use of USB 3.0 interface, the device is capable to obtain smooth and high-quality image at up to 15FPS at 2560x1920 or 45FPS at 1280x960.



High optical resolution

The superior optics adopted in the Edge series reveals the finest details, answering the needs of the most demanding microscopy applications.



5.0 Megapixels

The advanced CMOS image sensor allows to transmit sharp and crisp image with resolution up to 2560x1920 without compression.



Flexible LED Control (FLC)

Tasking with software, the FLC maximizes illumination flexibility by offering independent on/off control to the four LED quadrants in addition to the 6-levels intensity adjustment capability.



Adjustable polarizer

The built-in adjustable polarizer allows to freely remove the unwanted reflection or glare from the object surface for a better contrast.



Scroll Lock

The scroll lock ensures the focus knob staying at the desired focus or magnification position without worry of unintentional movement.



Robust housing

The metal housing made of aluminum alloy offers compelling advantages of protection and endurance.



Interchangeable caps

The interchangeable caps provide adaptability to numerous applications with alternative lighting or object interface, such as but not limited to diffused-light, ring-light, and coaxial-light etc.

Interchangeable front caps



N3C-C / Close Cap

This cap protects the lens and LED lights from contamination of dust, debris, or moisture.



N3C-D / Diffuser Cap

This cap diffuses the LED light.



N3C-D2 / Opal Diffuser Cap

This cap diffuses the LED light.



N3C-E / Extended Open Cap

Dino-Lite Edge (stand type) will focus at approximately 200x when the cap touches surface.



N3C-L / Long Cap

This cap is useful to adjust the working focus of Dino-Lite Edge at lower magnification.



N3C-O / Open Cap
This is the standard cap for normal usage.

N3C-S / Sidelight Cap
This cap creates images with more depth and texture.

Information about working distance and field of view

M	WD	FOV (x)	FOV (y)	DOF
10	234.5	39.0	29.2	12.0
20	112.5	19.5	14.6	4.5
30	72.5	13.0	9.7	3.1
40	54.5	9.8	7.3	1.8
50	43.5	7.8	5.8	1.2
60	37.5	6.5	4.8	0.9
70	33.7	5.6	4.2	0.6
80	31.3	4.9	3.6	0.5
90	29.9	4.3	3.2	0.37

Model	AM73915MZTL Dino-Lite Edge 3.0
Interface	USB 3.0
Product Resolution	5M pixels (2560x1920)
Magnification	10x~140x
Frame Rate	15fps at 5MP, YUY2 (USB 3.0) 45fps at 1.3MP, YUY2 (USB 3.0) 15fps at 1.3MP, YUY2 (USB 2.0)
Lighting	8 white LEDs
Polarizer	Yes
Microtouch	Yes

Model	AM73915MZTL Dino-Lite Edge 3.0
Interface	USB 3.0
Product Resolution	5M pixels (2560x1920)
Magnification	10x~140x
Frame Rate	15fps at 5MP, YUY2 (USB 3.0) 45fps at 1.3MP, YUY2 (USB 3.0) 15fps at 1.3MP, YUY2 (USB 2.0)
Lighting	8 white LEDs
Polarizer	Yes
Microtouch	Yes
Operating System Supported	Windows 10, 8, 7 Mac OS 10.9 or later (EDOF/EDR are NOT controllable on Mac OS)
System Requirements	<ul style="list-style-type: none"> - Intel® Core™ i5 3.2GHz - 20GB available HD space - 8GB available RAM or more - 2GB video card or more - CD-ROM drive for installation - USB 3.0 with intel chipset
Calibration Function	Yes
Measurement Function	Yes
Unit Dimension	11.9cm (H) x 3.3cm (D)
Unit Weight	110g

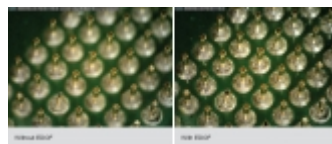
Gallery



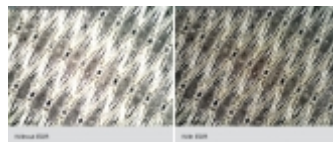
Componet



Watch



IC



Ply Metal