



Remarkably compacted with a built-in coaxial light, the 5MP Edge AM7515MT4A delivers exceptional brightfield image at 415~470x magnifications. Through the use of Flexible LEDs Control (FLC), the AM7515MT4A is capable of switching between or mixing brightfield and darkfield for more details. Taking the advantages of Automatic Magnification Readings (AMR), the AM7515MT4A may optimize the measurement with efficiency and accuracy for catering the needs of most measuring tasks.

Overview



#### High optical resolution

The superior optics adopted in the Edge series reveals the finest details, answering the needs of the most demanding microscopy applications.



#### 5.0 Megapixels

Thanks to the low loss MJPEG compression, the advanced CMOS image sensor allows to transmit fluid and crisp image with resolution up to 2592x1944.



#### Brightfield/Darkfield

Without the need of other accessories, the brightfield and darkfield illumination can be provided separately or coordinated with each other to explore for more details.



#### Automatic Magnification Reading (AMR)

Without the hassle to stop and check the magnification for doing a measurement, the AMR detects the magnification rate automatically through the software, making the measurement be a more efficient, accurate, and pleasant process.



#### Scroll Lock

The scroll lock ensures the focus knob staying at the desired focus or magnification position without worry of unintentional movement.



#### Robust housing

The metal housing made of aluminum alloy offers compelling advantages of protection and endurance.



#### Interchangeable caps

The interchangeable caps provide adaptability to numerous applications with alternative lighting or object interface, such as but not limited to diffused-light, ring-light, and coaxial-light etc.



#### Flexible LED Control (FLC)

Tasking with software, the FLC maximizes illumination flexibility by offering independent on/off control to the four LED quadrants in addition to the 6-levels intensity adjustment capability.

#### Interchangeable front caps



##### N3C-C / Close Cap

This cap protects the lens and LED lights from contamination of dust, debris, or moisture.



##### N3C-E / Extended Open Cap

Dino-Lite Edge (stand type) will focus at approximately 200x when the cap touches surface.



##### N3C-O / Open Cap

This is the standard cap for normal usage.

## Information about working distance and field of view

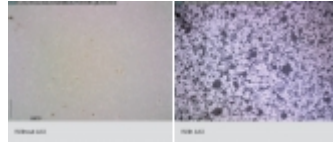
M	WD	FOV (x)	FOV (y)	DOF
415	6.0	0.951	0.697	
420	7.3	0.926	0.680	
430	8.0	0.905	0.664	
440	8.8	0.884	0.648	
450	10.0	0.867	0.636	
460	11.3	0.847	0.621	
470	11.8	0.828	0.608	0.04

M = magnification rate    WD = working distance (without front cap)    FOV = field of view  
DOF= depth of field    Unit = mm

### Gallery



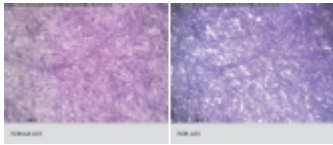
Wafer



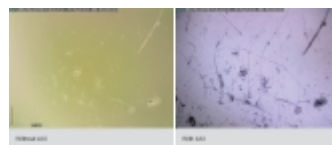
Ceramic



Metal



Paper Fiber



Plastic

### Specification

Model	AM7515MT4A Dino-Lite Edge
Interface	USB 2.0
Product Resolution	5M pixels (2592x1944)
Magnification	415x~470x
Frame Rate	10fps in 5MP/3MP/2MP, MJPEG 25fps in 1.3MP, MJPEG 30fps in VGA, MJPEG
Lighting	8 white LEDs
Polarizer	Yes
Microtouch	Yes
Operating System Supported	Windows 10, 8, 7, Vista, XP Mac OS 10.9 or later

### System Requirements

- Intel Core2 Duo @ 2.20 GHz/AMD Athlon X2 Dual Core BE-2400 (2.3GHz)
- 20GB available HD space
- 2GB available RAM or more
- 512MB video card or more
- CD-ROM drive for installation
- USB 2.0

Calibration Function	Yes
Measurement Function	Yes
Unit Dimension	10.7cm (H) x 3.2cm (D)
Unit Weight	139g

