



The Dino-Lite AM4515T8 Edge series handheld microscope features high magnification (700x~900x), improved optics for sharper images, and Automatic Magnification Reading (AMR) for easy measurement. This model also features a greater working distance at high magnification, which provides more clearance between the microscope lens and the object under view. With these features, this microscope will excel in biomedical research, material analysis, electronics inspection, or any similar applications that require the examination and measurement of intricate structures.

The specialized software bundled with this product (DinoCapture 2.0) allows users to calibrate the microscope, capture & annotate images, measure image features, and record video. With the Automatic Magnification Reading (AMR) feature, measuring image features becomes as easy as point-and-click. Users are not bothered with manually reading and entering the magnification into the software before every measurement, which increases efficiency and reduces the potential for human error.

This AM4515T8 also features a scroll lock on the magnification dial to secure the dial and fix the focus and magnification, which can be helpful to prevent unintentional rotations of the dial. Other standard features include the MicroTouch shutter button for quick and convenient picture taking and eight high-intensity white LEDs that fully illuminate the viewing subject. The AM4515T8 can be used on its own as a handheld device or secured in place with a microscope stand. For tabletop usage, the Dino-Lite RK-10 universal stand is the best choice for this model, due to its precision controls and sturdy design, which make it a stable viewing platform at high magnifications. To learn more, visit the RK-10 product information page under the Accessories product category on this website.

Overview



Jp to 900X magnification

With up to 900x magnification and high-resolution optics, this Edge series model reveals details smaller than 1.5 μm while delivering superior image quality.



PC Compatible

This Dino-Lite Edge series microscope connects to the USB 2.0 port on any compatible Windows PC. Once connected, users can easily record, manage, and share their observations using our proprietary software (DinoCapture 2.0). This software is provided free of charge to customers and features professional measurement tools with calibration.



Automatic Magnification Reading (AMR)

With this feature built into the microscope, our proprietary software will automatically detect and display the magnification readings in real-time, and store the magnification within each captured image. This feature improves the accuracy and precision of these readings while also increasing overall efficiency.



Fine Focus Dial

This specially designed dial improves the user experience associated with making fine focus adjustments under high magnification.



MicroTouch shutter button

Take picture-perfect photos quickly and conveniently with the MicroTouch shutter button. This small, round, touch-sensitive button responds to the lightest touch to avoid blurry photos caused by excessive movement of the microscope. The MicroTouch shutter button can also be configured to control video recording, trigger barcode scanning, or switch on/off the LED lights.



Adaptable cap design

This model features a detachable and interchangeable front cap that extends its range of use, as different caps are available for various applications. Removing the front cap provides greater working distance and access to the full magnification range.

Interchangeable Front Caps



N3C-C / Close Cap

This cap protects the lens and LED lights from contamination of dust, debris, or moisture.



N3C-E / Extended Open Cap

Dino-Lite Edge (stand type) will focus at approximately 200x when the cap touches surface.



N3C-O / Open Cap

This is the standard cap for normal usage.

Information about working distance and field of view

M	WD	FOV (x)	FOV (y)	DOF
700	6.6	0.6	0.4	
800	6.4	0.5	0.4	
900	6.3	0.4	0.3	0.016

M = magnification rate WD = working distance (without front cap) FOV = field of view DOF = depth of field Unit = mm

Specification

Model : AM4515T8 Dino-Lite Edge

Interface : USB 2.0

Product Resolution : 1.3M pixels (SXGA)

Magnification Rate : 700x~900x

Sensor : Color CMOS

Frame Rate : Up to 30fps

-Save Formats:

+Image:

DinoCapture2.0: BMP, GIF, PNG, MNG, TIF, TGA, PCX, WBMP, JP2, JPC, JPG, PGX, RAS, PNM

DinoXcope: PNG, JPEG

+Movie:

DinoCapture2.0: WMV, FLV, SWF

DinoXcope: MOV

Microtouch : Touch sensitive trigger on the microscope for taking pictures

Measurement Function : Yes

Calibration Function : Yes

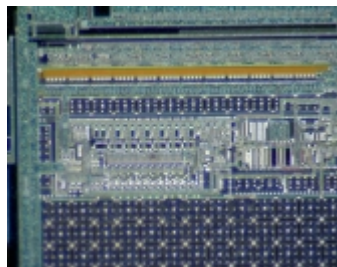
Operating System Supported : Windows 10, 8, 7, Vista, XP; Mac OS 10.9 or later

Unit Weight : 100g

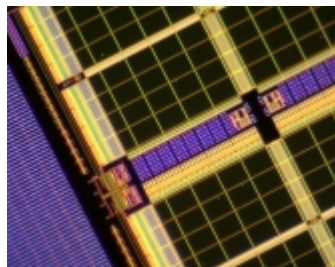
Unit Dimension : 10.3 cm (H) x 3.2 cm (D)

Package Dimensions : 16cm (L) x 16cm (W) x 6cm (H)

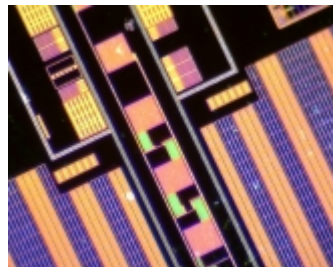
Gallery



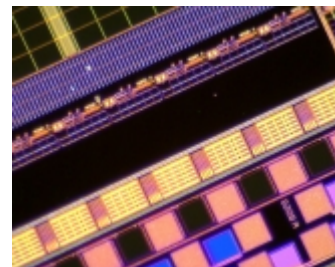
Wafer



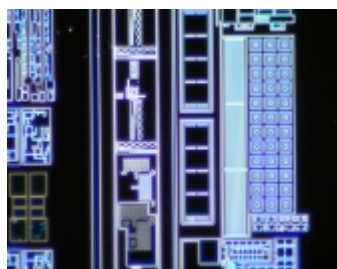
Wafer



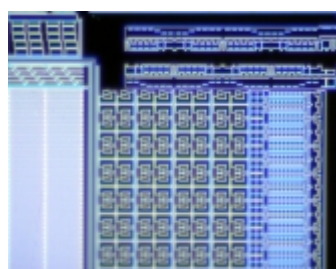
Wafer



Wafer



Wafer



Wafer



RK-10 Stand

